

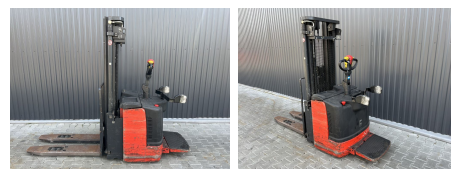
## Linde L20API

**Capacity:** 2000 kg  
**Mast type:** Triplex  
**Lift height:** 4465 mm  
**Closed height:** 2065 mm  
**Free lift:** 1465 mm  
**YOM:** 2014  
**Running hours:** 7271  
**Engine type:** Electric  
**Tech. Condition:** good  
**Visual condition:** good

**Com Nr.:** SL8372SLO

**Battery:** 24V,

### Extras:



**Price: 4.000,00 € (excl. VAT.)** (Subject to prior sale)