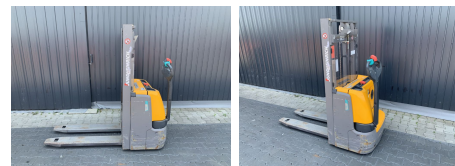
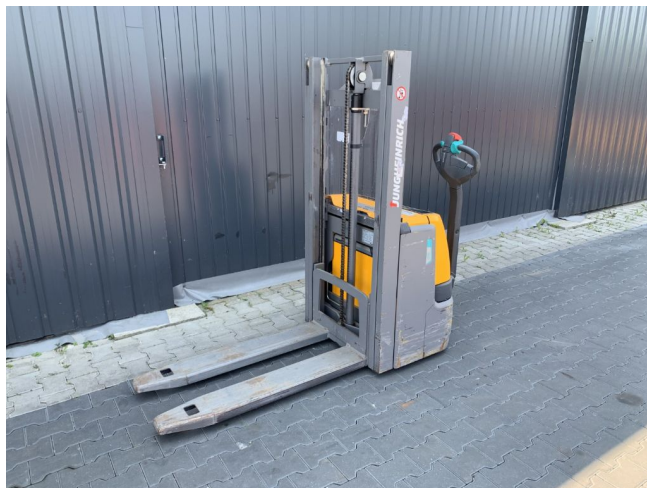


Jungheinrich EJC110

Capacity: 1000 kg
Mast type: Duplex Standard
Lift height: 2500 mm
Closed height: 1750 mm
YOM: 2018
Running hours: 769
Engine type: Electric
Tech. Condition: good
Visual condition: good

Com Nr.: SL6522
Battery: Li-Ion, 24V,

Extras:



Price: 3.200,00 € (excl. VAT.) (Subject to prior sale)