

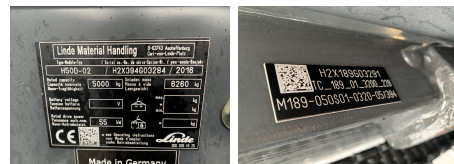
## Linde H50D-02

**Capacity:** 5000 kg  
**Mast type:** Duplex Standard  
**Lift height:** 3200 mm  
**Closed height:** 2620 mm  
**Free lift:** 2301 mm  
**YOM:** 2016  
**Running hours:** 10863  
**Engine type:** LPG  
**Tech. Condition:** good  
**Visual condition:** good

**Com Nr.:** SL6035

**Extras:**

Side Shift Fork positioners  
Half cabin



**Price: 27.000,00 € (excl. VAT.)** (Subject to prior sale)