

## Jungheinrich EFG216k

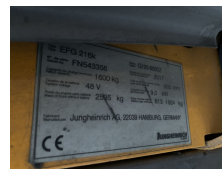
**Capacity:** 1600 kg  
**Mast type:** Triplex  
**Lift height:** 6500 mm  
**Closed height:** 2765 mm  
**Free lift:** 2175 mm  
**YOM:** 2017  
**Running hours:** 10959  
**Engine type:** Electric  
**Tech. Condition:** good  
**Visual condition:** good

**Com Nr.:** SL5709

**Battery:** 48V,

**Extras:**

Fork positioners 3rd valve 4th valve



**Price: 13.000,00 € (excl. VAT.)** (Subject to prior sale)